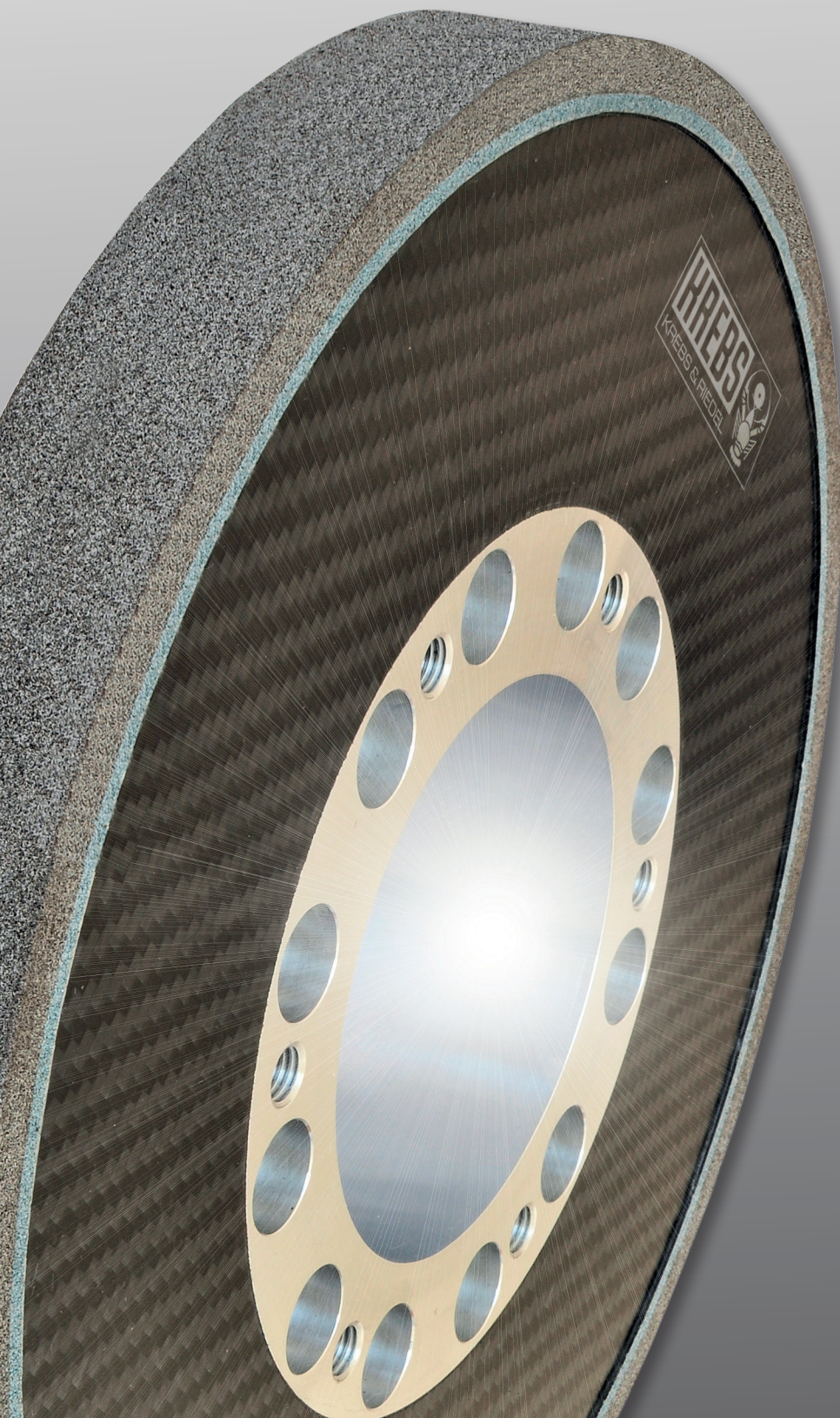


**The innovative Carbon Fiber  
grinding wheel body from  
KREBS & RIEDEL**

---

**HI-COMP**



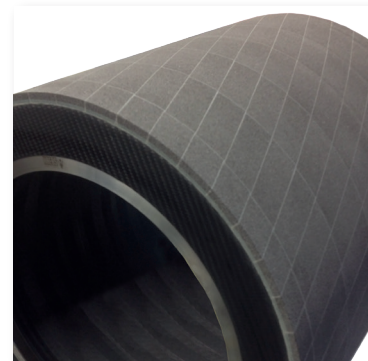
# KREBS & RIEDEL High Composite

## HI-COMP

KREBS & RIEDEL presents with HI-COMP a new wheel body variant for CBN and diamond abrasives.

The high proportion of carbon fiber used to form the KREBS HI-COMP wheel hubs guarantees maximum strength with minimum weight. Depending on the process requirement different sizes are used and this ensures optimal and customized solutions to meet end users specific requirements. Having been under development for over two years the HI-COMP wheel bodies are up to 75% lighter than comparable steel bodies. This not only guarantees easy handling for machine set-up personnel during installation but also dramatically decreases the load on the grinding spindle during grinding.

HI-COMP wheels also provide much better vibration damping characteristics as compared with conventional steel grinding wheel bodies. This is useful not only for interrupted cut grinding but for standard cylindrical grinding as well. The grinding process due to the changing conditions of contact combined with the abrasive behavior of the HI-COMP body's superior harmonics is vastly improved and results in improved surface quality on the ground component. This allows, for example, for users to either accept the immediate improvement in ground surface quality or otherwise look to using a rougher grade of wheel that will give faster stock removal and therefore faster cycle times but to retain the finishes originally being achieved; that or of course a combination of both.



### Application:

- Grinding zones with interruption of cut
- Grinding of smaller intricate parts
- Grinding processes with altering contact conditions
- Higher surface requirements (contact ratio Rmr)

### Advantages:

- Improved surface quality
- Increased part tolerances
- Reduced flaws
- Good grinding characteristics even under unstable conditions
- Improved performance of the grinding spindle
- Body can be recoated with abrasive after initial use



KREBS & RIEDEL Schleifscheibenfabrik GmbH & Co. KG  
Bremer Straße 44, D-34385 Bad Karlshafen, Germany  
Telephone +49 5672 184 0, Fax +49 5672 184 218  
mail@krebs-riedel.de, www.krebs-riedel.de